

## Knife Change Instruction



- Before beginning, make certain the knife adjustment levers on the back of the machine are at the 12 o'clock position.



- Remove the left knife bolt by bringing the knife bar to BDC with cut buttons.

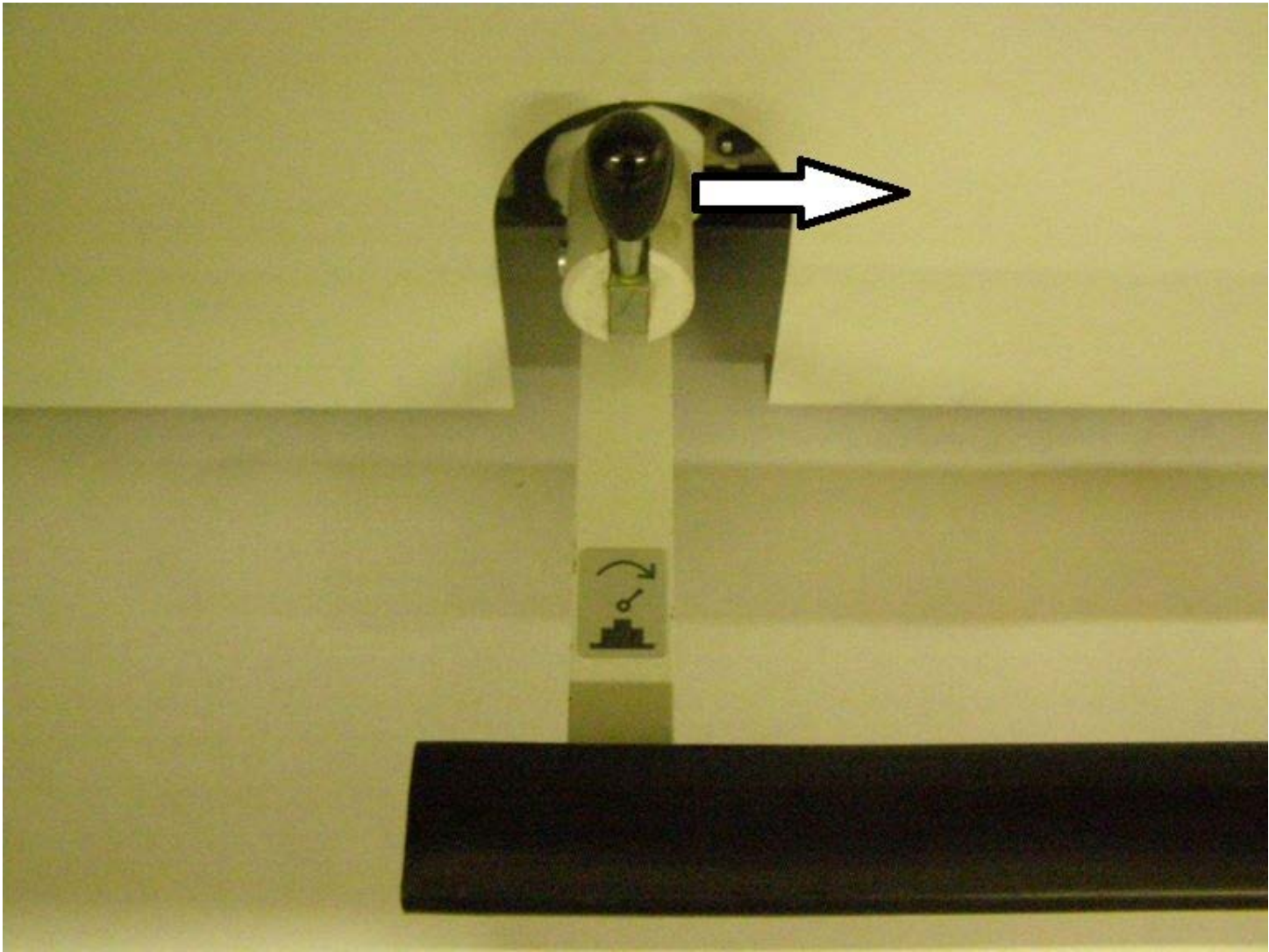


- While the knife bar is down, loosen the two lock bolts and turn both knob screws counter clockwise to raise the knife-backing cams off the knife. Snug the two lock bolts. Return the knife to TDC.





- Lock the clamp down by lowering the foot pedal and rotating the lock-down lever to the right, putting the machine in knife change mode.



- Remove the remaining knife bolts.

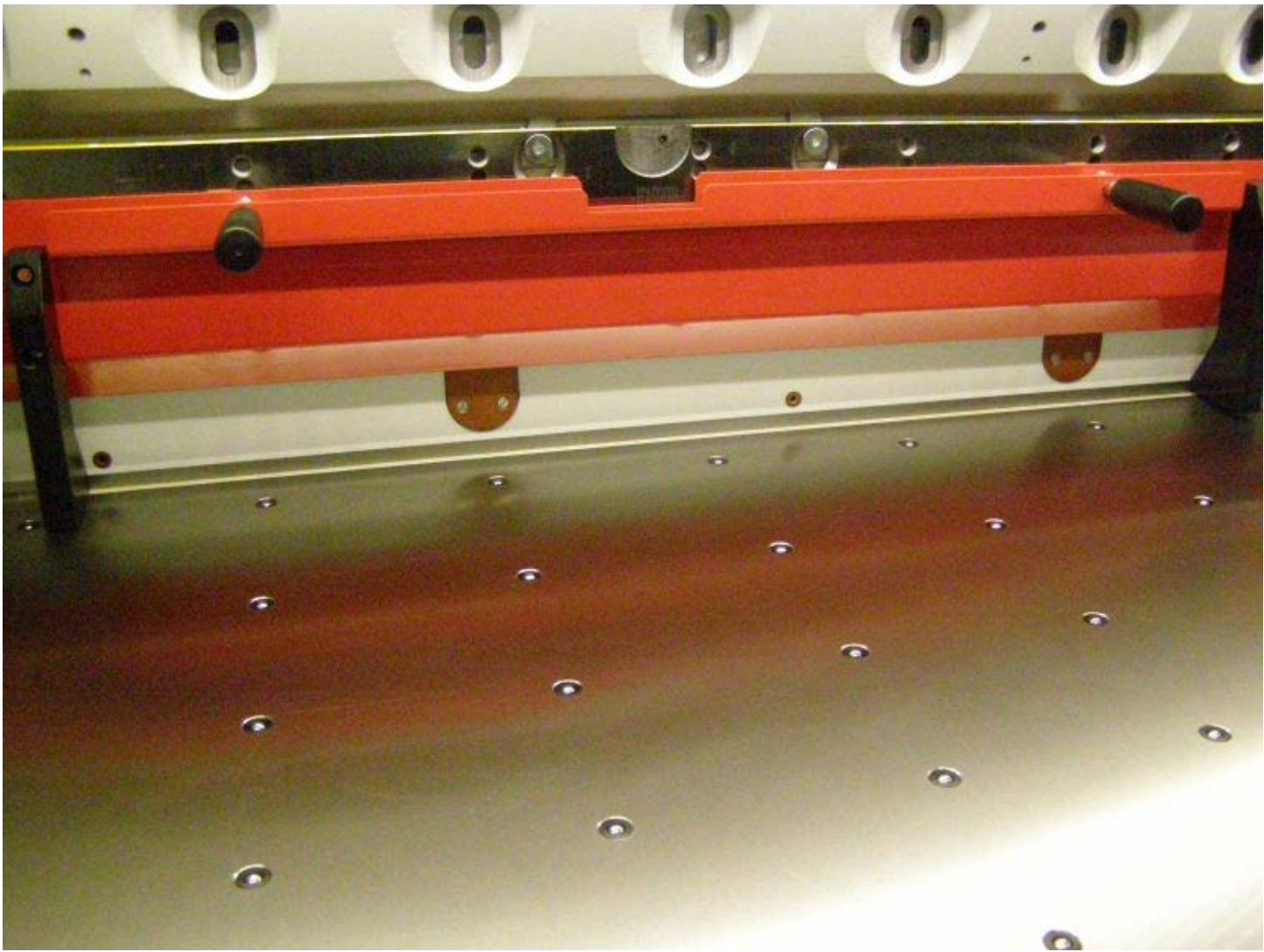


- Lower the dull knife using the chain devise in the middle of knife bar.



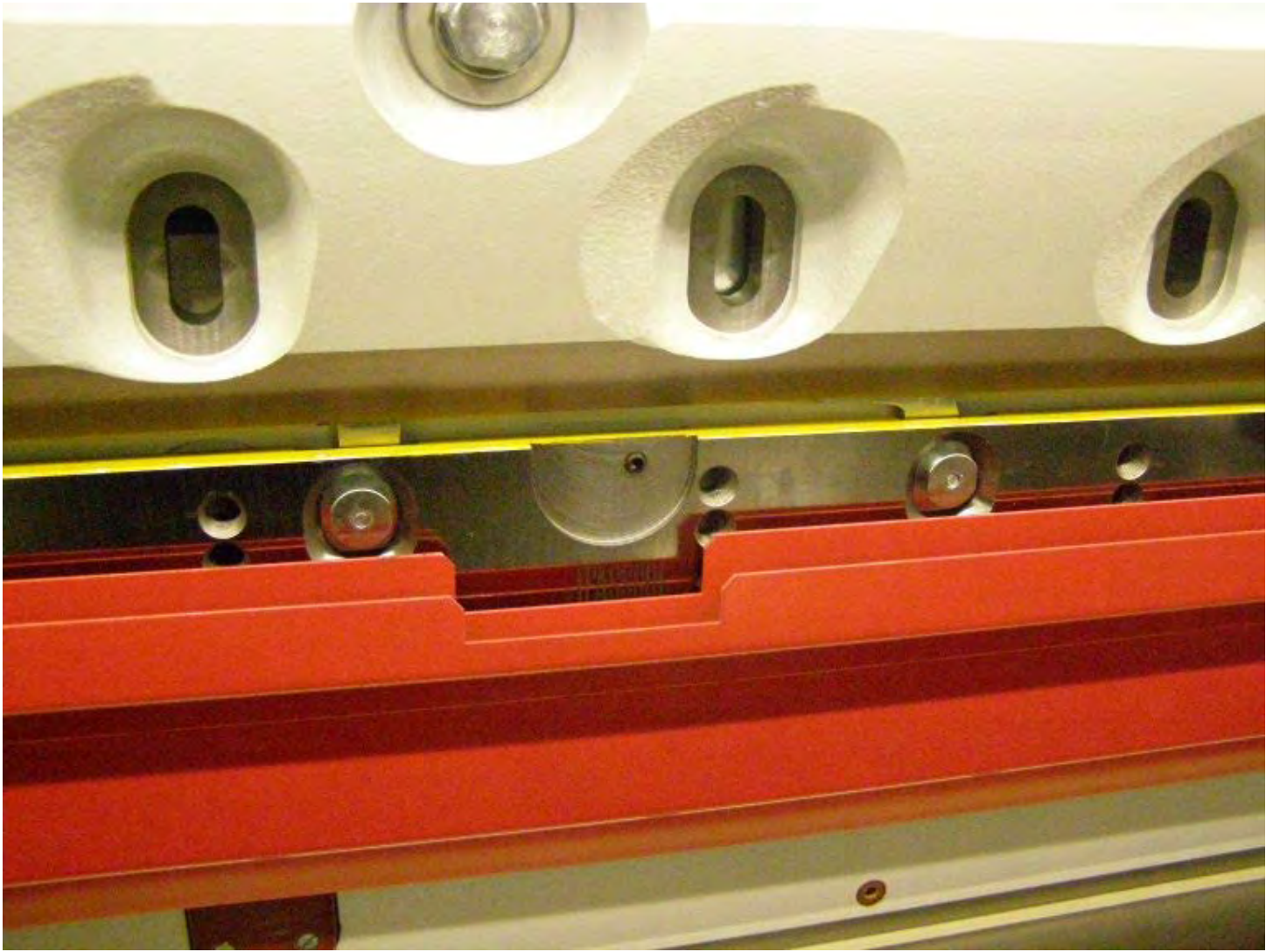


- Once the knife is below the knife bar, attach the knife guard to the knife.

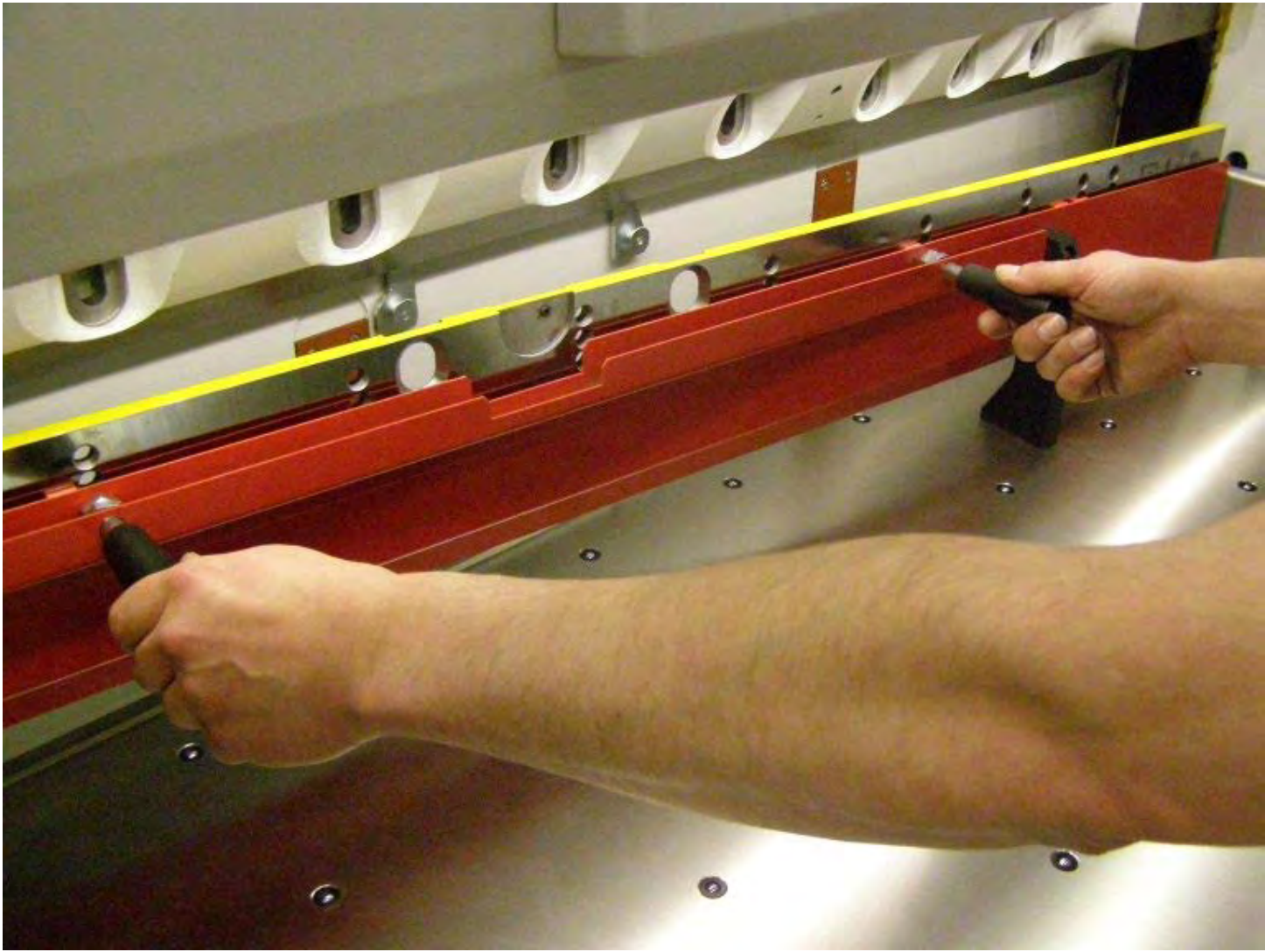


- Lower the knife to the bed and remove the chain by pushing the spring in and turning the latch.





- Slide the knife to the left until the right side is clear of the frame. Leading with the right side, remove the knife.



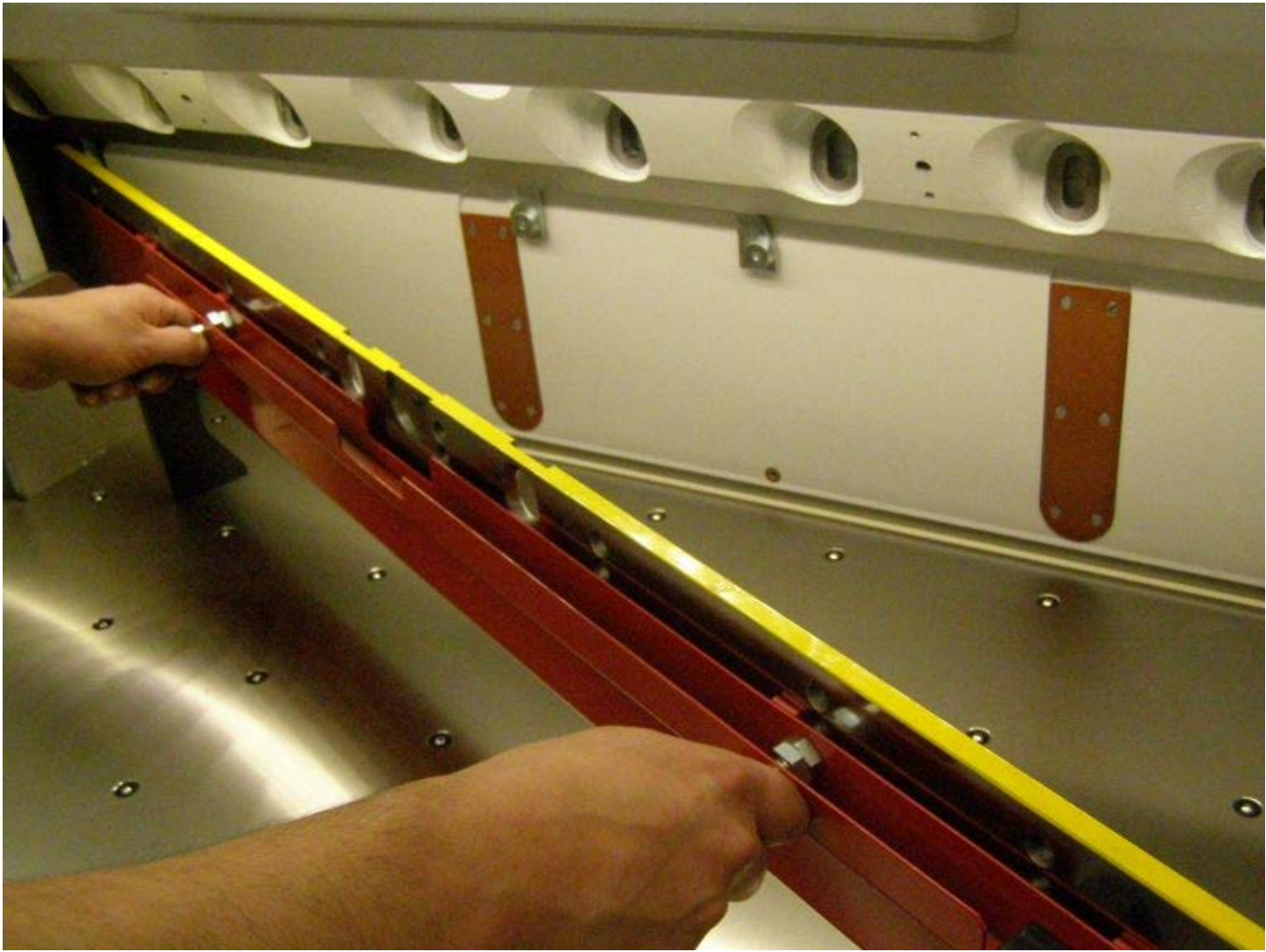
- Insert the dull knife into an empty knife sheath. Remove the knife guard and install it on a sharp knife that is still in sheath.



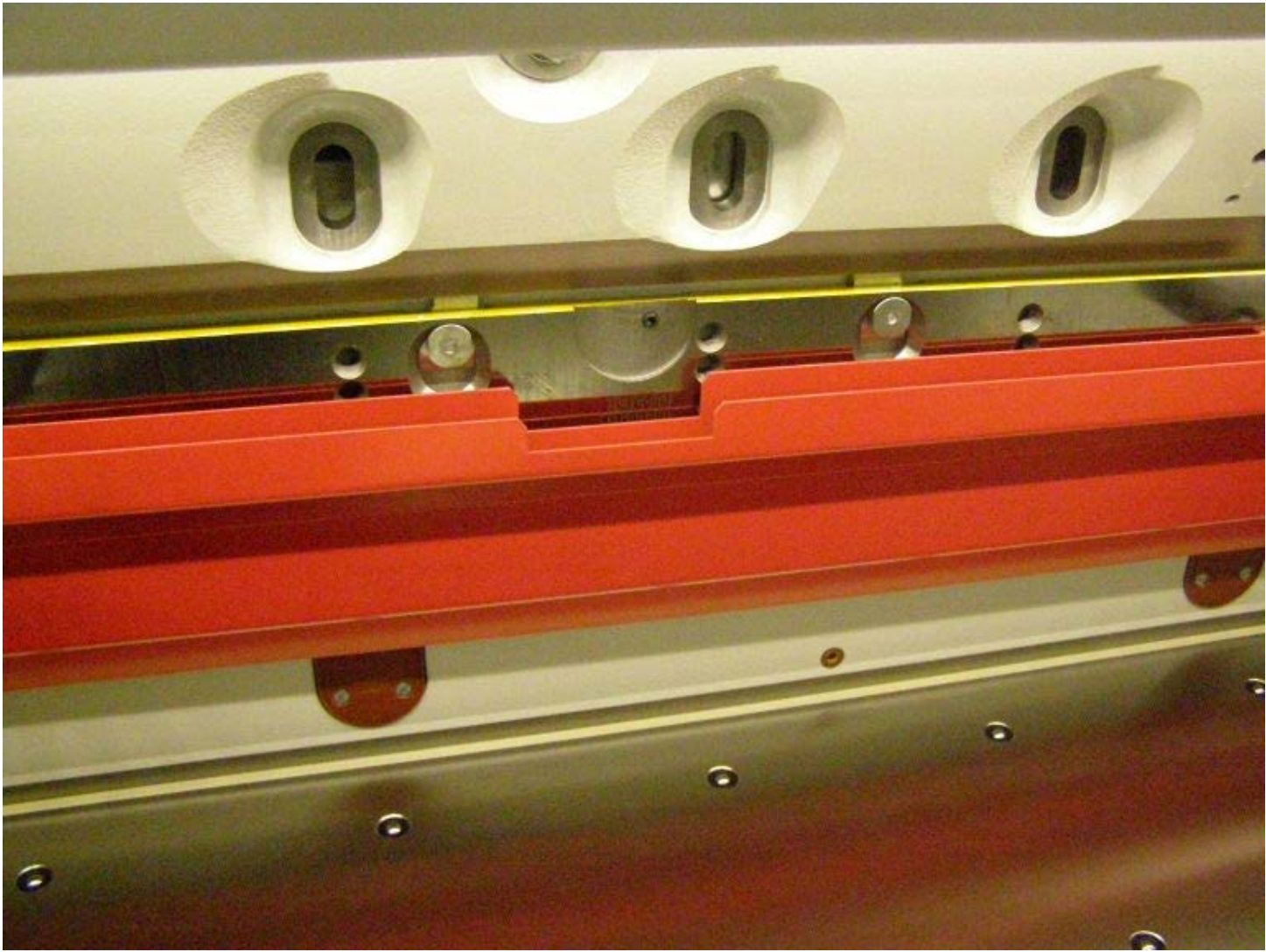


- Slide the knife into the cutting area leading with the left side first.





- Attach the new knife to the chain and raise it until the knife guard is to the knife bar. Remove the knife guard and raise the knife into the knife bar until it stops.



- Install the knife bolts leaving them slightly loose so the knife will move freely in the slots. You may need to use an alignment pin to line up the bolts holes.



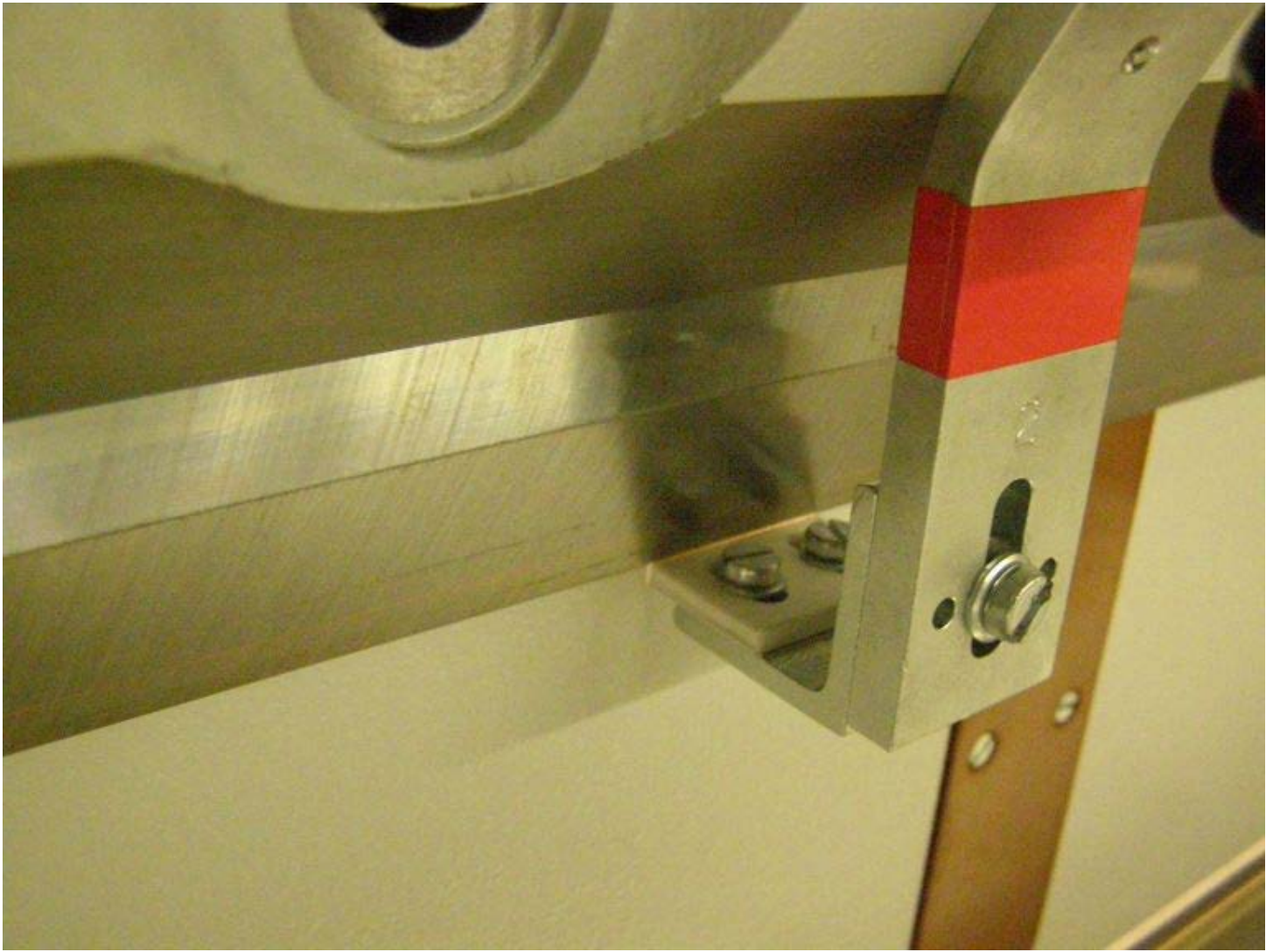


- Install the knife setting gauges. Make sure that the gauges are in the correct location. The gauge marked 1 goes on the left and 2 on the right.





- Lower the knife by the chain devise onto the pads of the gauges.



- Tighten the knife bolts.

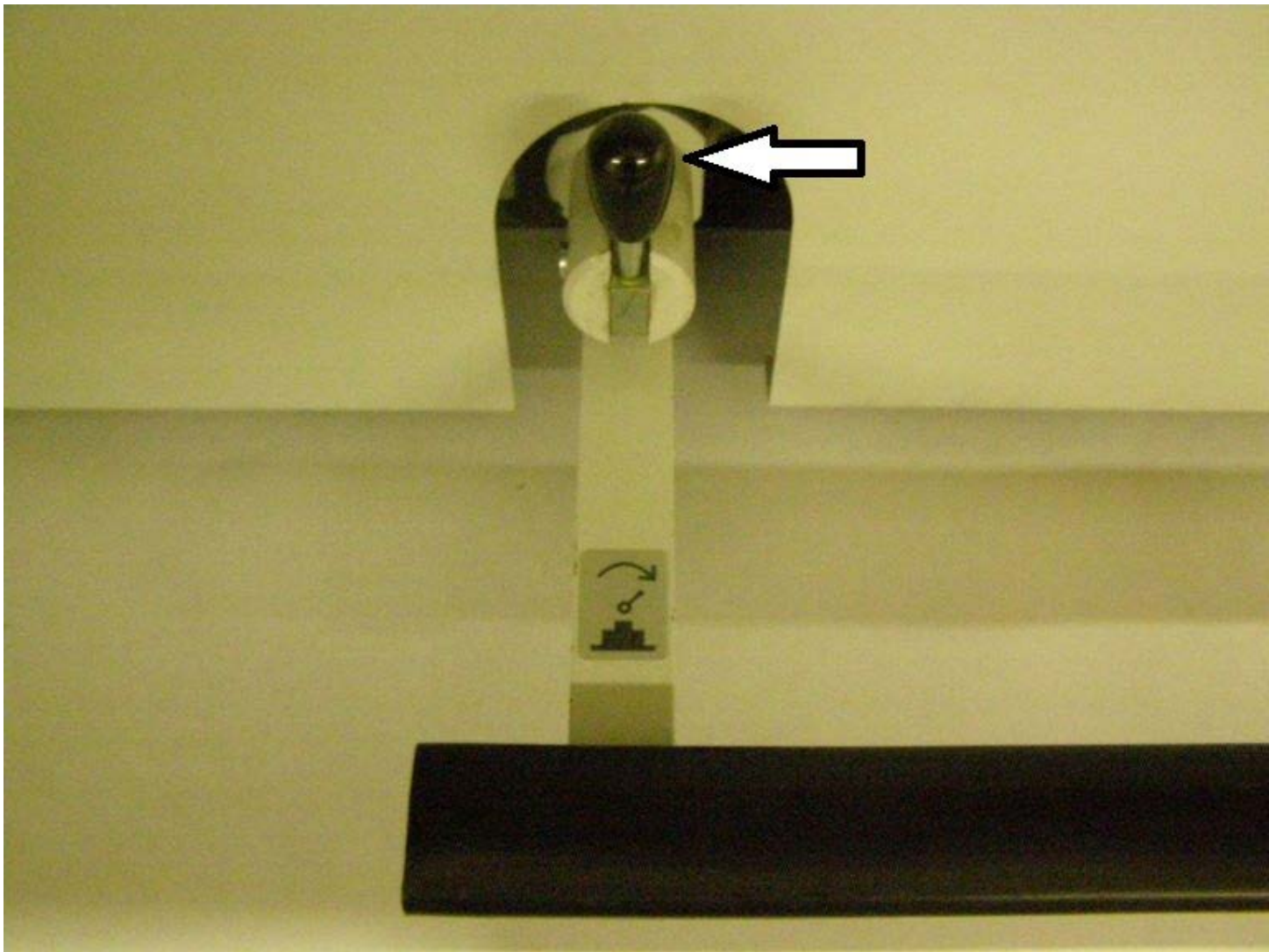


- Remove the setting gauges from the knife bar.





- Rotate the foot pedal lock counter clockwise to release the clamp.



- Cycle the machine to BDC to install the remaining knife bolt. Adjust the knife backing cams clockwise. Make sure there is no slack in chain device.





- Return the knife bar to TDC. Install or rotate the cut stick.



[Mainpage](#)